

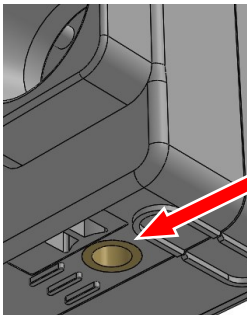


X310
Pocket Chronograph
User manual

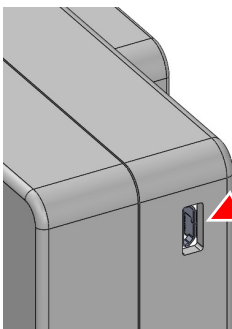


Joystick operation

Center: Power on/off
Up / Down / Left / Right: Move cursor



For tripod attach



Micro USB
For external power

1683 RPM
110.6 m/S

Shooting count

Joystick CENTER
Power off

Joystick LEFT
RPM / RPS
Quick change unit.

Joystick RIGHT
m/S / ft/S
Quick change unit.

Joystick CENTER
Power off

Joystick RIGHT
Quick change Ammo memory

Shooting count

SHOT MEMO.
AMMO
UNIT
APO

SN	RPM	m/S
2	1683	110.6
1	1664	107.6
-	----	----
-	----	----
-	----	----

Store latest 25 shot information.
Use joystick UP, DOWN to see more.

Selected AMMO

Weight

Caliber

SHOT MEMO.
AMMO
UNIT
APO

NO.	WT.	CAL.
1	0.2	6
>2	0.25	6
3	0.43	6
EXIT		

Preset AMMO data.
Use joystick to select preset AMMO or adjust AMMO detail.

SHOT MEMO.
AMMO
UNIT
APO

ROF SPEED
EXIT

RPM
m/S

Use joystick to select preferred unit.

ROF: Rate Of Fire
RPM Round per minute **m/S** meter per second
RPS Round per second **ft/S** feet per second

SHOT MEMO.
AMMO
UNIT
APO

> 1 MINUTE
10
20
30
EXIT

APO (Auto Power Off)
No any action after selected timer, X310 will power off.

AMMO
UNIT
APO
BACK LIGHT

TYPE AUTO
BRI. HIGH
REV. NO
EXIT

TYPE(AUTO,OFF,ON):
Backlight AUTO on/off, always OFF, always ON.

BRI.(HIGH,MID,LOW):
Brightness in HIGH, Middle, LOW level.

REV.(NO,YES):
Reverse LCD screen is NO or YES.

UNIT
APO
BACK LIGHT
CONTRAST

ADJUST 10
DEFAULT
EXIT

Setup LCD contrast value.
ADJUST: Range is 0~29.
DEFAULT: Reset to de-

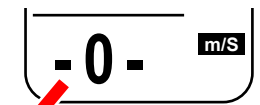
APO
BACK LIGHT
CONTRAST
RESET

RESET X310
EXIT

Reset me.

Features

- Ultra light weight. 60g
- Compact size. 71x51x47mm
- Only use ONE battery.
- Tripod attach available.
- External power available.
- Self alignment sensitivity.



-0- Velocity too low or measure fail. Normally, aim barrel to sensor hole will resolve this problem.

-9- Velocity too high or gas interference. Leave barrel a distance to sensor hole and try again.